

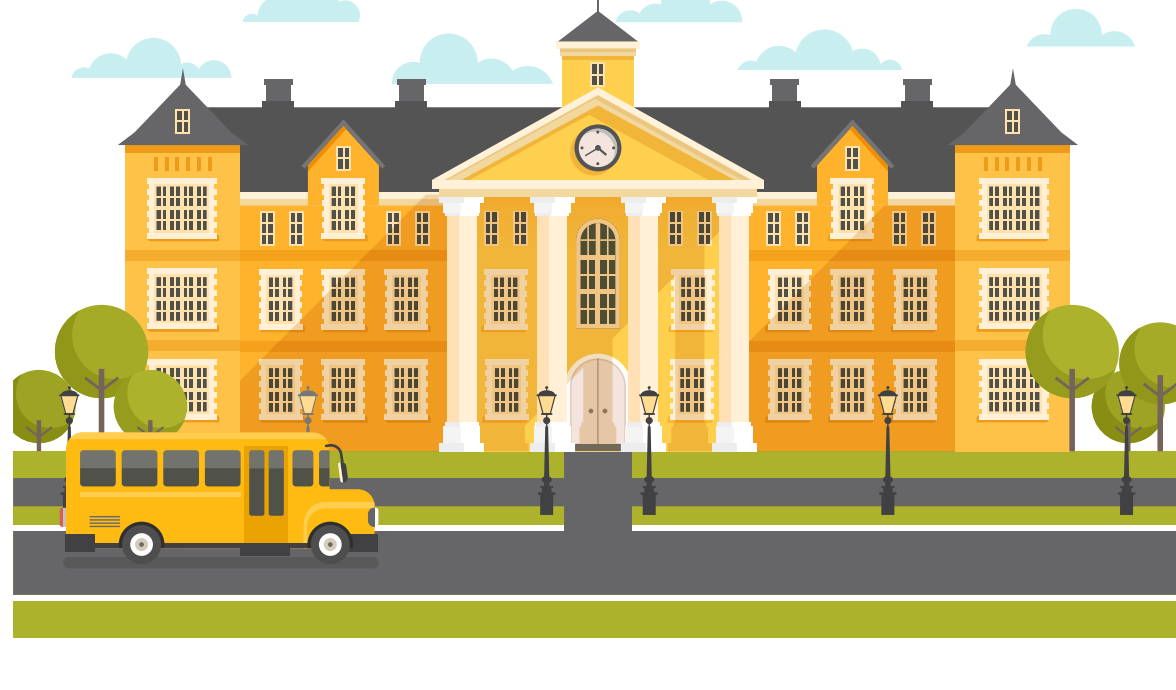
# ALL NEVADA K-12 SCHOOLS COVID-19 PROTOCOLS

## MASK WEARING

School staff, parents, vendors, volunteers, visitors, and guests must wear masks **inside school buildings** and **on school buses**.

Students must wear masks **on school buses**.

Exemptions allowed for those medically unable to wear a mask **with appropriate documentation**.



## CLARK & WASHOE COUNTIES

(ALL Public, Charter & Private Schools)



Students must wear masks **inside school buildings**.

## ALL OTHER NV COUNTIES

(ALL Public, Charter & Private Schools, county population under 100k)



Student mask policy on school grounds determined by county school district.

### COVID-19 SCHOOL-WIDE OUTBREAK OVERRULE

When county health authority identifies a **school outbreak** (extending beyond one classroom), students must wear a mask in school buildings throughout outbreak period, **regardless of individual school mask policy**.

## PHYSICAL DISTANCING

Maintain at least **3 feet** of physical distance between students within classrooms, when possible.

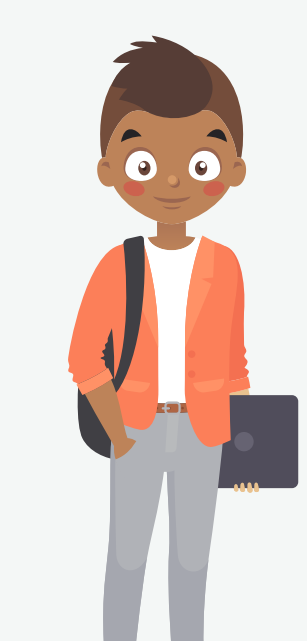


## TESTING

### UNVACCINATED



**UNVACCINATED** students, staff & volunteers participating in activities that involve travel to schools outside their county (games, tournaments, competitions, concerts, etc.) **must be regularly tested** for COVID-19.



Testing must occur at least **1x per week**.

Students must wear masks **on school buses**.

Exemptions allowed for those medically unable to wear a mask **with appropriate documentation**.

### VACCINATED



**VACCINATED** students, staff & volunteers do not have to undergo testing unless they **experience symptoms** or after close contact with a person with COVID-19.

## SCHOOL ATTENDANCE

Students, teachers, and staff who have symptoms of infectious illness, such as influenza or COVID-19, should stay home until symptom free and no longer contagious.

### UNVACCINATED



**UNVACCINATED** students and staff should stay home after close contact with a person with COVID-19.