

Steve Sisolak
Governor



Richard Whitley
Director

State of Nevada
**Department of Health and
Human Services**

Update Concerning the Status of COVID-19 in Nevada

Kyra Morgan, MS, State Biostatistician

Julia Peek, MHA, CPM, Deputy Administrator of Community Health Services



8/13/2020

Helping people. It's who we are and what we do.



(intentionally left blank, for printing)



COVID-19 By The Numbers

COVID-19 (Coronavirus)



State of Nevada
Department of Health and
Human Services
Office of Analytics
data@dhs.nv.gov



For More Information Please Visit:

[Nevada Health Response](#)

Last updated on 08/19/2020 at 10:00 am, with data through the previous day. Please note that updates apply incrementally and may be in process for up to an hour after the update time listed here.

Total Tests (molecular)

769,298
+ 6,584

Confirmed Cases

63,028
+ 389

Deaths

1,134
+32

Tests per 1,000 per week*

13.5

Daily Positivity Rate*

12.5%

Cumulative Positivity Rate*

10.7%

Please reference technical notes page for updated methodology.

Current Hospitalizations

Confirmed Suspected

667 200
-61 +25

Intensive Care Unit (ICU)

262
-5

Hospitalization data are not updated on Sundays.

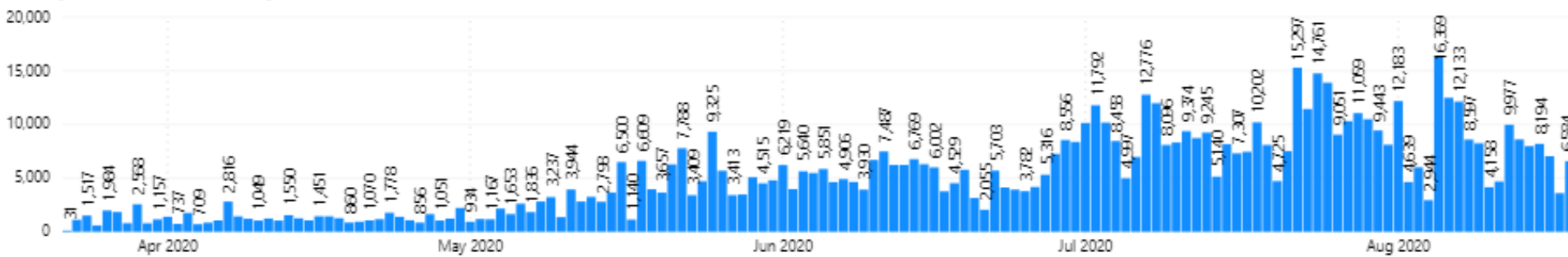
COVID-19 data are reported as timely, accurately, and completely as we have available. Data are updated as we receive information that is more complete and will change over time as we learn more.

*The daily positivity rate and number of tests per 1,000 per week are reported on a 5-day lag and based on the date the sample was collected (specimen collection date). The cumulative positivity rate is cumulative through the most recent specimen collection date with data available.

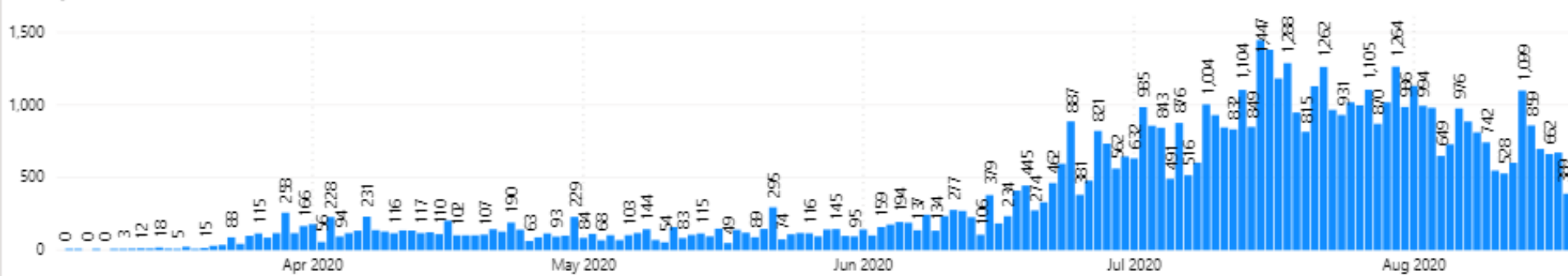
COVID-19 By The Numbers

Nevada has experienced a sustained decline in new cases being diagnosed since July 13th.
 We experienced the highest number of daily deaths 8/6 – 24 deaths.

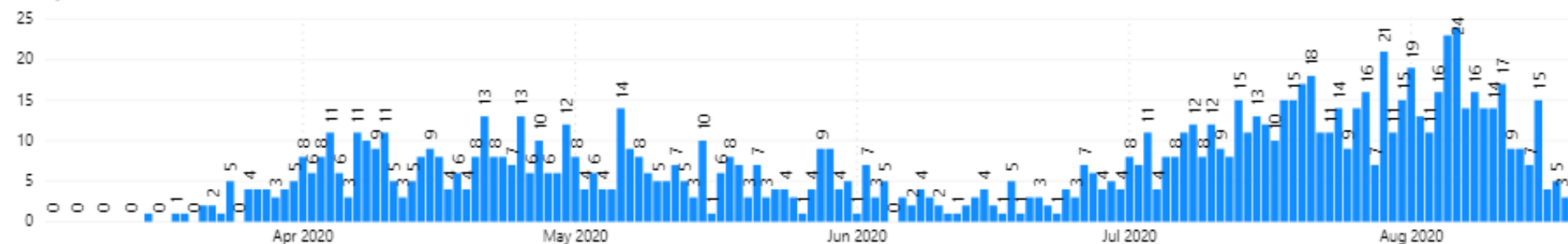
Daily New Tests Reported



Daily New Cases



Daily Deaths



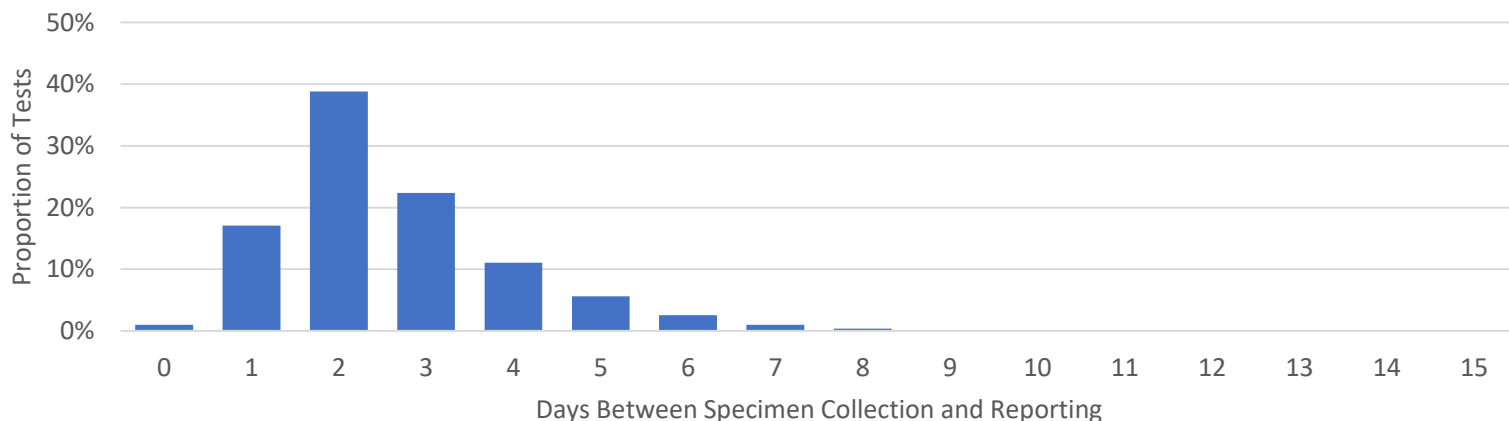
COVID-19 Testing Turnaround



Analysis Variable : Specimen_To_Report_Days

	N	%	Median Time from Specimen Collection to Report
CPL	1,412	1%	2
LABCORP	10,603	11%	2
NSPHL	15,509	16%	3
Other	7,500	8%	2
QUEST	14,204	15%	4
RRMC	1,970	2%	2
SOUTHERN	5,620	6%	4
UMC	38,228	40%	2
Total	95,046	100%	2

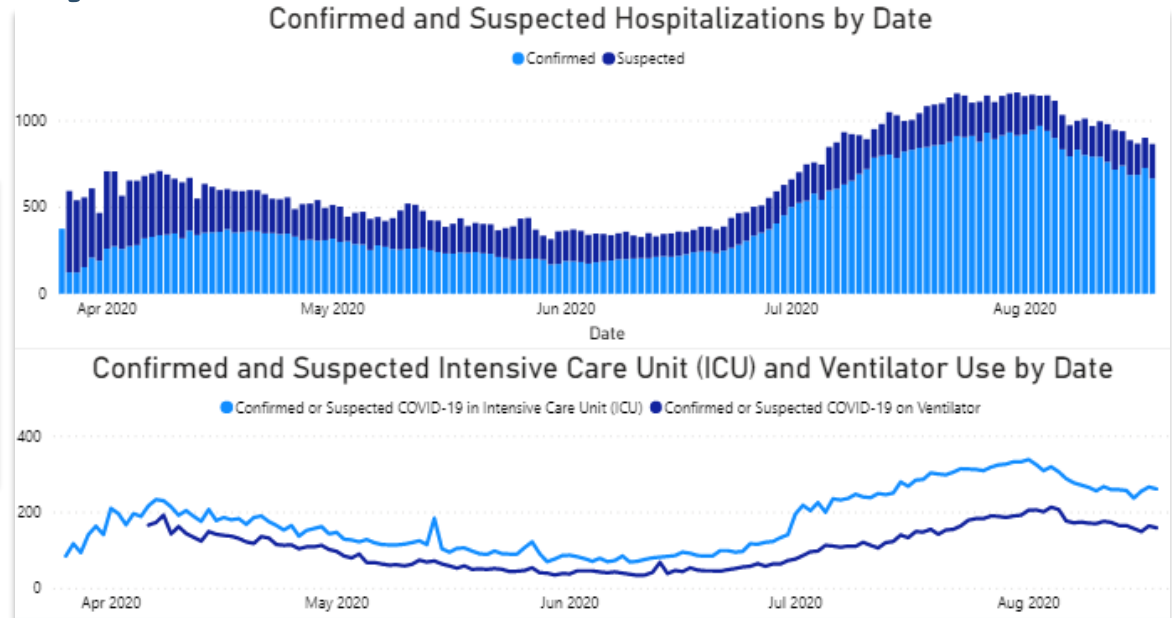
For specimens collected since August 1st, it has taken approximately 2 days after specimen collection for results to be reported.



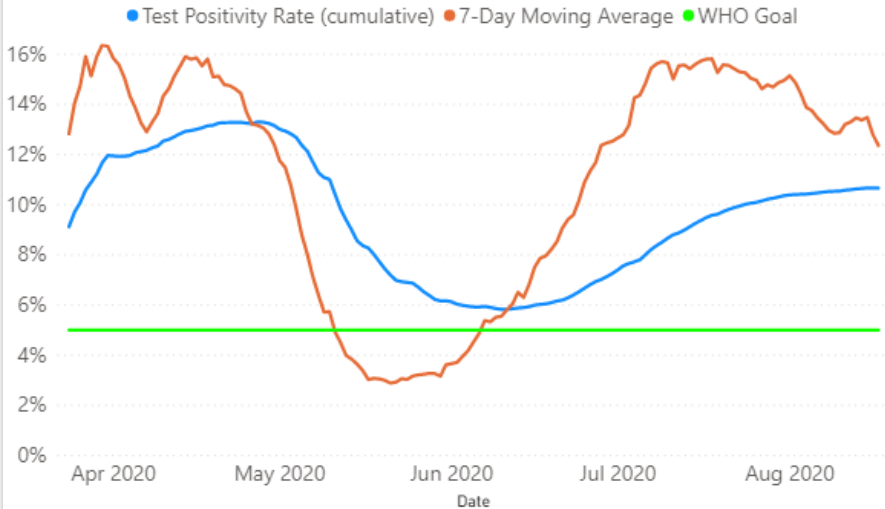


COVID-19 By The Numbers

Hospitalizations were following an increasing trend until 8/03 and have since been decreasing for the past 15 days.



Test Positivity Rate (cumulative), 7-Day Moving Average and WHO Goal by Specimen Collection Date



The cumulative test positivity rate was following an increasing trend until 08/01 and has been stabilizing for the past 18 days, with only very slow increases.



COVID-19 County Tracker

COVID-19 County Tracker



State of Nevada
Department of Health and
Human Services
Office of Analytics



[For additional COVID-19 statistics, click here to access the main data dashboard](#)

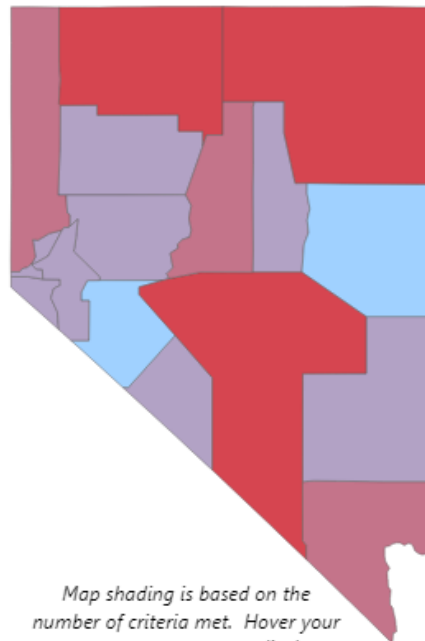
Last updated: 08/13/2020

County Tracker

Nevada's counties are diverse in so many ways and have been impacted by COVID differently. In order to ensure that each county is assessed for elevated disease transmission, this tracker will be updated on Fridays for the previous 2-week period in order to monitor progress.

A county is flagged for elevated disease transmission if it meets two of the three criteria:

- Average number of tests per day (per 100,000) < 150.** The average number of molecular tests conducted in the most recent complete two week period in a county, divided by the number of people living in the county. This number is then multiplied by 100,000 to control for varying populations in counties. Due to reporting delay, this is reported over a 14-day period with a 7-day lag. Counties that average fewer than 150 tests per day will meet this criterion.
- Case rate (per 100,000) > 200.** The total number of cases diagnosed and reported over a 30-day period divided by the number of people living in the county. This number is then multiplied by 100,000 to control for varying populations in counties. Counties with a case rate greater than 200 per 100,000 will meet this criterion.
- Case rate (per 100,000) > 50 AND testing positivity > 7.0%.** The total number of positive molecular tests divided by the total number of molecular tests conducted. This number is then multiplied by 100 to get a percentage. Due to reporting delay (which may be different between positive and negative tests), this is reported over a 14-day period with a 7-day lag. Counties with a test positivity > 7.0% paired with case rate greater than 50 per 100,000 will meet this criterion.



Map shading is based on the number of criteria met. Hover your cursor over a county to display more data.

County	Average Number of Tests per Day per 100,000 (14-day average with 7-day lag)	Case Rate per 100,000 (last 30 days)	Test Positivity (14-day with 7-day lag)
Carson City	275.4	321.9	4.8%
Churchill	185.0	220.3	4.9%
Clark	240.5	887.6	15.5%
Douglas	134.5	152.9	3.8%
Elko	125.1	471.0	15.1%
Esmeralda	132.0	0.0	0.0%
Eureka	105.4	50.9	6.9%
Humboldt	111.4	375.1	15.4%
Lander	85.8	150.1	9.7%
Lincoln	42.6	38.5	9.7%
Lyon	73.9	88.0	5.2%
Mineral	219.3	21.9	0.7%
Nye	120.5	311.1	17.2%
Pershing	101.6	14.4	1.0%
Storey	27.2	22.4	0.0%
Washoe	206.7	434.6	7.8%
White Pine	350.9	75.6	1.3%

COVID-19 County Tracker

COVID-19 County Tracker



State of Nevada
Department of Health and
Human Services
Office of Analytics



[For additional COVID-19 statistics, click here to access the main data dashboard](#)

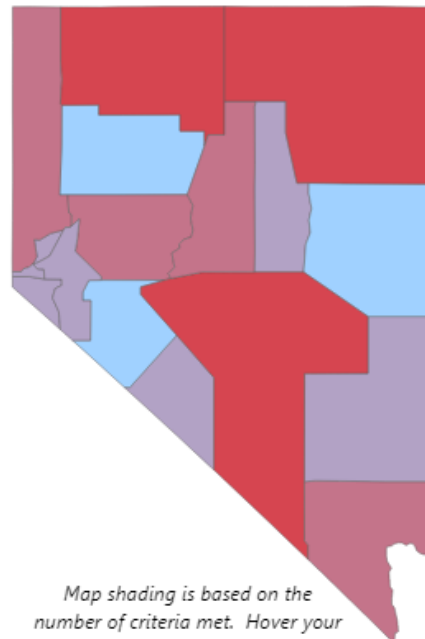
Last updated: 08/19/2020

County Tracker

Nevada's counties are diverse in so many ways and have been impacted by COVID differently. In order to ensure that each county is assessed for elevated disease transmission, this tracker will be updated on Fridays for the previous 2-week period in order to monitor progress.

A county is flagged for elevated disease transmission if it meets two of the three criteria:

- Average number of tests per day (per 100,000) < 150.** The average number of molecular tests conducted in the most recent complete two week period in a county, divided by the number of people living in the county. This number is then multiplied by 100,000 to control for varying populations in counties. Due to reporting delay, this is reported over a 14-day period with a 7-day lag. Counties that average fewer than 150 tests per day will meet this criterion.
- Case rate (per 100,000) > 200.** The total number of cases diagnosed and reported over a 30-day period divided by the number of people living in the county. This number is then multiplied by 100,000 to control for varying populations in counties. Counties with a case rate greater than 200 per 100,000 will meet this criterion.
- Case rate (per 100,000) > 50 AND testing positivity > 7.0%.** The total number of positive molecular tests divided by the total number of molecular tests conducted. This number is then multiplied by 100 to get a percentage. Due to reporting delay (which may be different between positive and negative tests), this is reported over a 14-day period with a 7-day lag. Counties with a test positivity > 7.0% paired with case rate greater than 50 per 100,000 will meet this criterion.



Map shading is based on the number of criteria met. Hover your cursor over a county to display more data.

County	Average Number of Tests per Day per 100,000 (14-day average with 7-day lag)	Case Rate per 100,000 (last 30 days)	Test Positivity (14-day with 7-day lag)
Carson City	268.7	283.0	5.0%
Churchill	194.6	228.0	8.7%
Clark	221.4	768.2	14.6%
Douglas	131.5	120.7	3.0%
Elko	126.9	445.6	14.8%
Esmeralda	80.7	0.0	0.0%
Eureka	134.4	50.9	5.4%
Humboldt	71.2	375.1	8.2%
Lander	81.0	150.1	13.2%
Lincoln	94.8	38.5	1.4%
Lyon	76.7	100.0	6.9%
Mineral	159.7	43.9	0.0%
Nye	80.0	259.9	12.4%
Pershing	303.7	43.1	1.0%
Storey	20.8	0.0	0.0%
Washoe	171.9	381.3	8.7%
White Pine	467.6	85.0	1.2%

COVID-19 County Tracker

County Tracker criteria over time.

County	7/9/2020	7/24/2020	7/30/2020	8/6/2020	8/13/2020	8/19/2020
Carson City	1	2	2	2	1	1
Churchill	0	0	0	0	1	2
Clark	2	2	2	2	2	2
Douglas	1	1	1	1	1	1
Elko	2	2	2	3	3	3
Esmeralda	0	1	1	1	1	1
Eureka	1	1	0	0	1	1
Humboldt	2	1	3	3	3	3
Lander	2	1	1	2	2	2
Lincoln	1	1	1	2	1	1
Lyon	2	1	1	1	1	1
Mineral	0	0	0	0	0	0
Nye	3	3	2	2	3	3
Pershing	1	0	1	1	1	0
Storey	1	1	1	1	1	1
Washoe	2	2	2	2	2	2
White Pine	0	0	0	0	0	0

Churchill County is now flagged for elevated disease transmission. This is due to an increase in positivity rate.

Case Investigation and Contact Tracing

Vendor/Agency	Estimated FTEs (call center staff, contact tracers, management, epidemiologists, disease investigators, administrative support, statisticians, etc.) funded through CRF and ELC
Deloitte	250
CAAA	200
UNLV (supports Clark County)	100
Great Basin College (supports Elko County, Lander County, and Eureka County)	4
UNR (supports Washoe County, Carson City, Lyon County, Storey County, and Douglas County)	90
State/Local Health Depts	200
Total Estimated Contract Staffing	844

- Goals:
 - Every Nevadan who tests positive for COVID-19 will be contacted by a contact tracer within 24 hours of that confirmatory lab report being received by the health authority.
 - Within 24 hours of identifying a close contact of a case, those individuals will be communicated with by a contact tracer.
- Based on the NACCHO estimate for effective COVID response, Nevada should have up to 948 full-time staff to support the case and contact investigations. This does not consider efficiencies found through automation of process and digital solutions.
- DPBH is working with Google and Apple to deploy COVID Trace, a proximity-based app to support the more traditional contact tracing services. There will be a “soft launch” with media partners this Friday and the official launch the week of the 24th.
- Ongoing themes related to case investigation and contact tracing:
 - Social gatherings outside of businesses
 - Familial/household exposure
 - Exposure at businesses/community exposure
 - Hotel/resort
 - Food establishments
 - Healthcare settings

COVID-19 Cases Identified Through Contact Tracing Efforts from January 1, 2020 to August 18, 2020

County	Positive Contacts Identified Through Case Investigation
Carson	6
Churchill	34
Clark	10,053
Douglas	0
Elko	197
Eureka	1
Humboldt	34
Lander	24
Lincoln	0
Lyon	0
Mineral	4
Nye	30
Pershing	1
Storey	0
Washoe	563
White Pine	4
Total	10,951 (represents 17.4% of total cases reported to date)

Please note Esmeralda County is omitted from this table, as they have had no reported COVID-19 cases to date. Data may change as cases still open for investigation are subject to changes in identification process types.





Discussion

